

Loddington C of E Primary School

2023 - 2024

Spring Newsletter

Year 2



Welcome Back!

I hope that everyone has had a wonderful and restful Christmas break and a lovely New Year. I can't quite believe that we are now in spring term! I'm excited to see you all refreshed and ready for our next term. If you have any pictures of any activities or adventures from the Christmas break, feel free to bring them in to share with the class or send on Seesaw.

Curriculum

This term we will be continuing with our *Geography* focus and will be exploring the town of **Northampton**. We will learn about human and physical features and devise our own simple sketch maps using aerial views and a key.

In *Science*, we will be exploring the topic of **Humans** and deepening our knowledge of building a healthy lifestyle through food, exercise, and hygiene. Children will conduct simple tests, record findings on given templates and answer questions using scientific language.

In *R.E.* we will be exploring **Islam** and will be learning about what Muslims believe. We will also be visiting Wellingborough Mosque on Monday 12th February.

PE Day

PE will continue to be on a **Monday**. Please ensure that your child comes to school wearing their P.E. kit on this day. PE kits should include a white or red t-shirt, navy or black shorts, trainers, navy or black jogging bottoms (only in the winter). Please also ensure that a water bottle is brought to school every day.

Homework

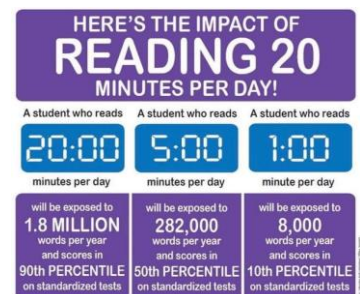
English homework will continue to be allocated through Spelling Shed. The spelling focus will cover a two-week period and will include a focus from children's spelling investigations and the Spell it Out words that children have been introduced to that week. Some weeks a grammar focus may be included.

Maths homework will continue to be allocated through TT rockstars. Please do encourage your children to practise the 2, 5 and 10 times tables through this to support fluency. TT rockstars can also be supplemented with Numbots to revise key concepts taught within class.

<u>Maths Key Instant Recall Facts for Spring</u>	<u>Mathematical Vocabulary</u>
<p>2 x table - multiplication and division facts 11×2 12×2</p> <p>5, 10 x table - Multiplication and division facts 3×5 3×10 4×5 4×10 5×5 6×10 6×5 7×10 7×5 8×10 8×5 9×10 9×5 10×10 10×5 11×10 11×5 12×10 12×5</p>	<p><u>Multiplication</u> multiplication, multiply, multiplied by, multiple, grouping, doubling, array, row, column, groups of, times once, twice, three times ... ten times, repeated addition, one each, two each, three each ... ten each, equal groups of, multiplication table, multiplication fact.</p> <p><u>Division</u> division, dividing, grouping, groups of, sharing, doubling, halving, array, number pattern, equal, unequal, odd, even, dividend, divisor, quotient.</p>

Reading

The children will continue to take their reading books home daily; please read at home each day and record this in your reading diary. Children will change their library book each **Friday**, please ensure that books are brought to school each Friday.



Seesaw

We will continue to use Seesaw to communicate and share key updates. Please also continue to use Seesaw as a way of sharing experiences and achievements from outside of school as I love to hear about these and share them with the class.

If you have any questions or wish to contact me about anything, please do not hesitate to contact me by email on s.mcewan@loddington.pdet.org.uk or send me a message on Seesaw.

Term 1 - Monday 8th January 2024 - Friday 16th February 2024
Term 2 - Tuesday 27th February 2024 - Thursday 28th March 2024